



FS170T FALCON

The FALCON Series

- Models available in wheel and/or track version
- Pass through a single or double door opening
- First and only compact lift with a double jib system
- Automatic outrigger setting (optional)
- Drive from basket (optional in wheel based lifts)
- Automatic, double safety and stability system
- Multi position outrigger system
- Set up on uneven surfaces
- Lightweight, detachable basket
- Self loads onto low bed trailer
- Customized trailer available upon request

We reserve the right to alterations

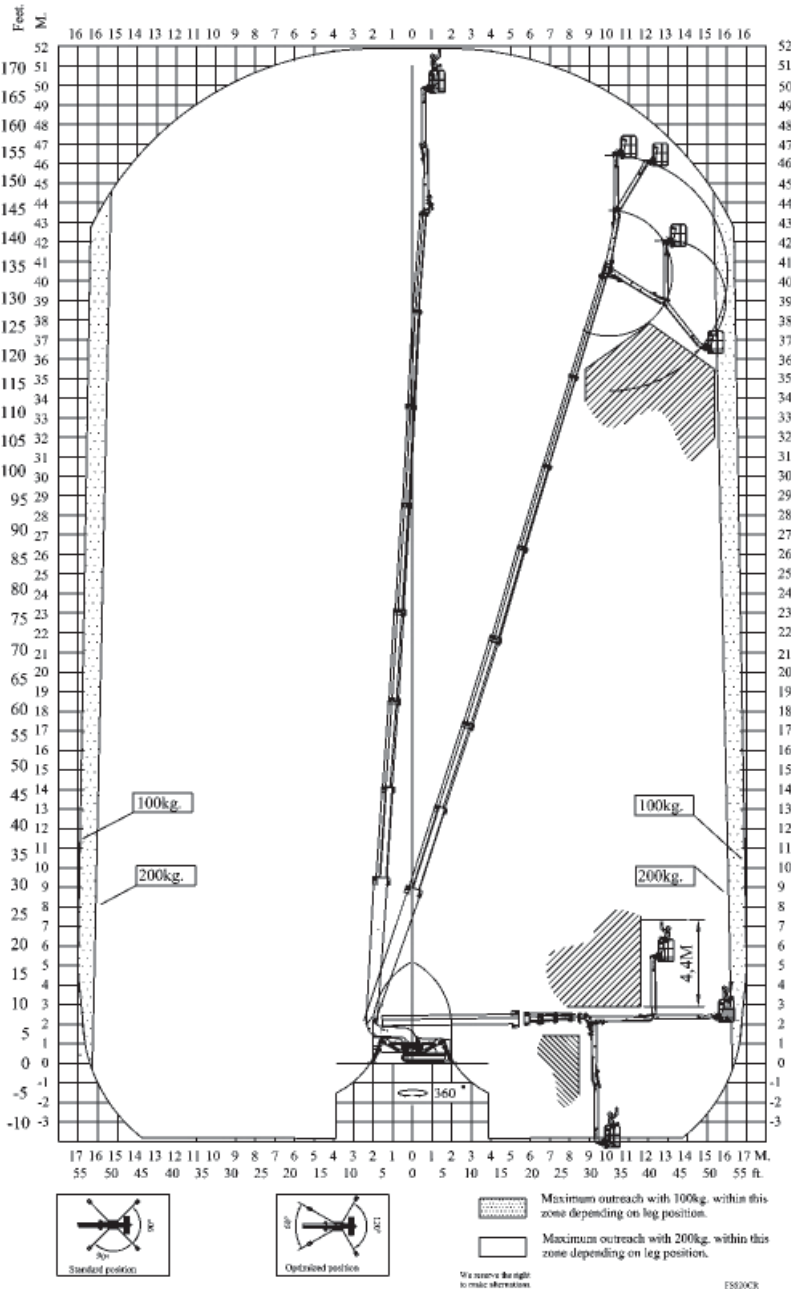
Features

FS170T

| | |
|--------------------------|-------------|
| Working height | 170 ft 7 in |
| Basket height | 166 ft |
| Max outreach | 52 ft 6 in |
| Jib arm (2x10ft) | 19 ft 8 in |
| Double jib arm | 200° |
| Basket load | 440 lbs |
| Basket dims | 2'7" x 4'7" |
| Basket rotation (opt) | +/-90° |
| Turret rotation | 375° |
| Height | 6 ft 11 in |
| Length | 30 ft 6 in |
| Width (min) | 4 ft |
| Width (max) | 5 ft 3 in |
| Gradability (standard) | 20°/37% |
| Weight (approx) | 29,736 lbs |
| 4 battery pack | Standard |
| 24V DC motor | Standard |
| Lombardini diesel engine | Standard |

FALCON

FS 170T



Standard equipment:

- Automatic stability & outreach control
- Computer controlled (can-bus)
- Proportional control of all functions
- Self-propelled
- Battery powered with charger
- Double link-arm system
- 375° turret rotation, with integrated stop
- +/- 90° basket rotation
- Individual setting of each outrigger
- Electronic checking of the power system (PLC)
- Manual pump system for emergency lowering
- Ability to self-load onto trucks or trailers
- Double crawler system
- Front crawler section adjustable
- Variable width
- Minimum width only 4 ft
- Space for tools etc. in basket
- Storage room in chassis with lock
- Diesel engine, Lombardini (4-cyl)
- Chassis control from basket

Options:

- 110V AC power supply in the basket
- Air/water supply in the basket
- Sensor system on basket
- Non marking crawlers
- Slope alarm
- 4 pcs extra batteries
- Autosetting/levelling
- Portable control panel
- Special outrigger footplates
- Basket in various sizes
- Special color
- Anemometer wind warning system

We reserve the right to alterations