



# FALCON FS108Z VARIO

## The FALCON 108Z Vario

The all-new Reach-Master Falcon FS108Z Vario is the latest model in the amazing Falcon line. The Vario is an all-new redesigned undercarriage with variable tracks. Lighter, stronger, more flexible with variable outriggers with 3 settings and up to 14° vertical spread in track positions.

The Falcon FS108Z Vario offers a record breaking horizontal reach of a staggering 62ft and 108 ft work height.

True hybrid with onboard Kubota diesel engine and batteries/charger system (from regular 110/115v 15-20 amp) is standard, as is variable outriggers, basket rotation and self-loading on truck/trailer.

The Falcon FS108Z Vario will appeal to a wide range of applications from window cleaning, tree care, building maintenance, roofing, construction and any application that needs extreme reach performance combined with limited access and surface weight restrictions.

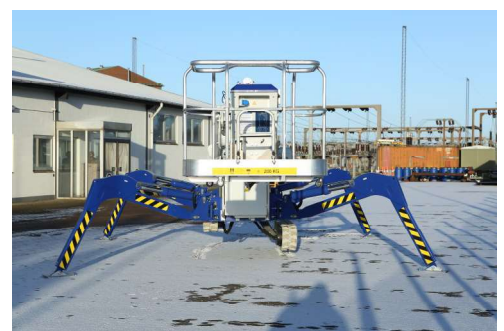
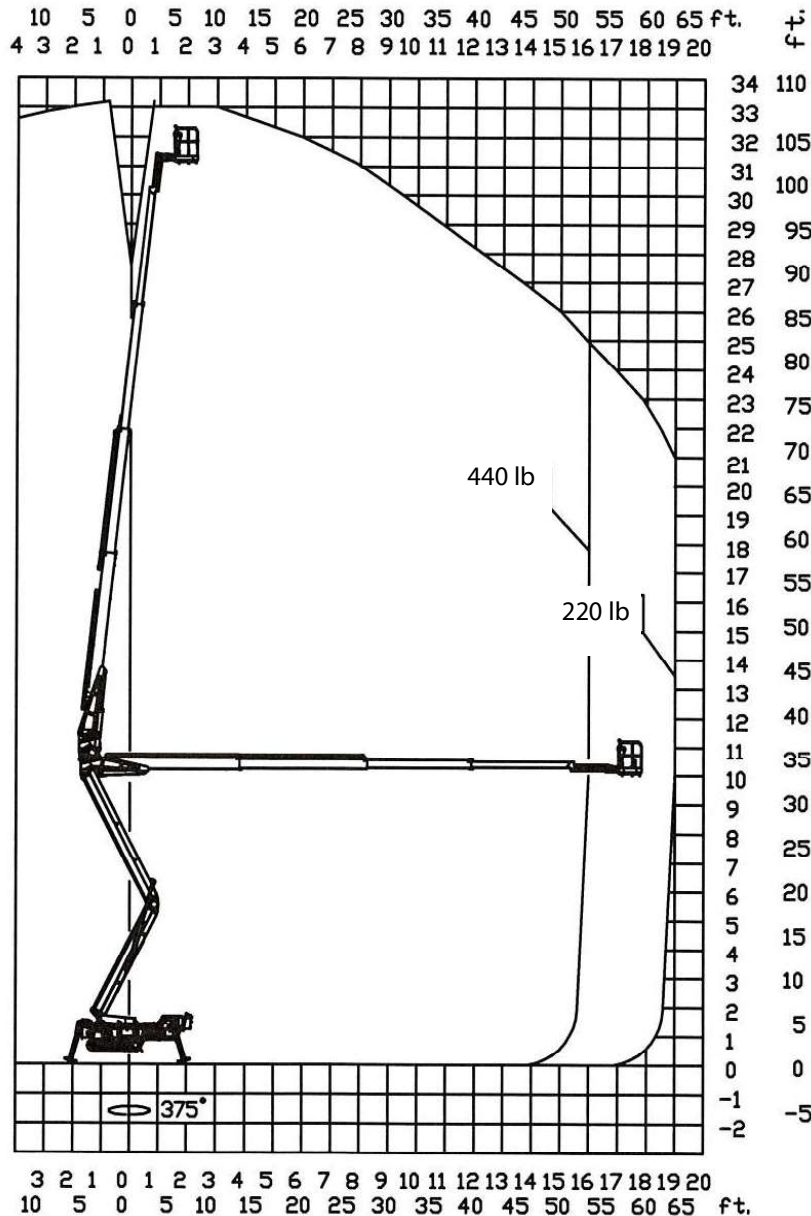
Reach-Master sets the benchmark for the segment - again!

- Set up on uneven surfaces
- Individual setting of outriggers
- Standard - Diesel and batteries
- Variable width - hydraulic
- Detachable basket
- Pass through double door opening

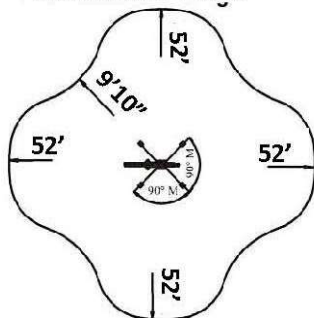
Model	FS108Z Vario
Working height	108ft
Basket height	102ft
Max outreach	62ft4in
Jib arm	110°
Basket load	440lbs
Basket dims	4'7" x 2'7"
Basket rotation (opt)	+/-90°
Turret rotation	375°
Height	7ft5in
Length	23ft11in
Width	4ft1in
Gradability (standard)	20°/37%
Weight (approx)	14,176lbs
4 battery pack	Standard
24V DC motor	Standard
Kubota diesel engine	Standard

# Falcon FS108Z Vario

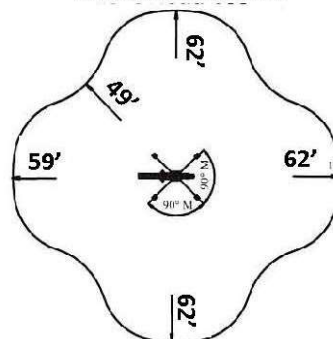
## Reach Diagram



Basket load 440 lb



Basket load 220 lb



All measurements in feet.

Service One Access, Inc.  
2850 W. Fulton Street  
Chicago, IL 60612  
TF: 800.298.7990  
[www.ServiceOneAccess.com](http://www.ServiceOneAccess.com)